

END OF UNIT 4 QUESTIONS

- 1 a (i) 0.6 (ii) 1×10^5
 b (i) 0.177 886 (ii) 17 788.6
 2 a 42% b £316.25 c £280

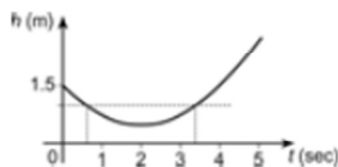
- 3 a 9.5 by 29.5 b 280.25 m^2
 4 a (i) $s = 600, u = 10, v = 90$ (ii) 12
 b 12.64 (2 d.p.), s, u and v have 2 d.p.
 5 a $C = 15n + 4$ b $n = \frac{C-4}{15}$
 6 39 000 feet
 7

t	0	1	2	3	4	5
h	1.5	0.75	0.5	0.75	1.5	2.75

- b 1.5 m c 0.5 m at 2 s d 0.6 s to 3.4 s
 8 a 5500 litres b 10 apartments c $N = \frac{V-2500}{150}$
 9 a £72.50 b 30 cm
 10 a $p = 192^\circ, q = 96^\circ$ b $r = 72^\circ$
 11 a $a = 2, b = 4$
 12 (i) $2x^\circ$ (ii) $(180 - 6x)^\circ$ (iii) $(90 - 3x)^\circ$
 13 a $\frac{5}{18}$ b $\frac{1}{12}$
 14 a $\frac{1}{15}$ b $\frac{1}{3}$ c $\frac{2}{15}$ d $\frac{2}{15}$
 15 a 150 cm b 24 cm c $-6\frac{2}{3}$

The last answer is not possible, as it is negative.

- 16 173 cm^2



- d 20 apartments